

**Neenah R-4990-OA Airport**

Series

**R-4990-OA**

Cut Sheet

51" Wide Airport Bolted

**51" Wide NEENAH Airport Bolted Extra Heavy Duty Trench Drain Grates and Frames**

Product ID: R-4990-OA



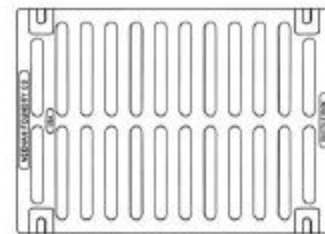
51" Wide Airport Neenah R-4990-OA Series Trench Grate and Frame

Frame is included / Bolted assembly - Please call if only Grate is needed.

Catalog No.	A	B	C	Grate Matl.
R-4990-AA	8	2	6	Gray Iron
R-4990-BA	10	2	8	Gray Iron
R-4990-CA	12	2	10	Ductile Iron
R-4990-DA **	14	2	12	Ductile Iron
R-4990-EA *	17	2	15	Ductile Iron
R-4990-FA *	20	2	18	Ductile Iron
R-4990-HA *	26	2	24	Ductile Iron
R-4990-KA2 *	34	2	31	Ductile Iron
R-4990-OA *	51	2	48	Ductile Iron

\* Type D solid cover available.

\*\* Type C grate available.



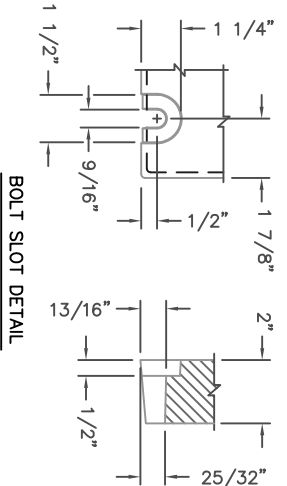
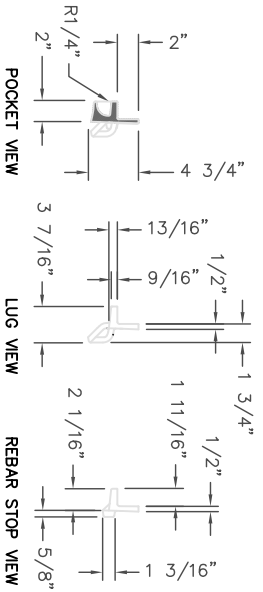
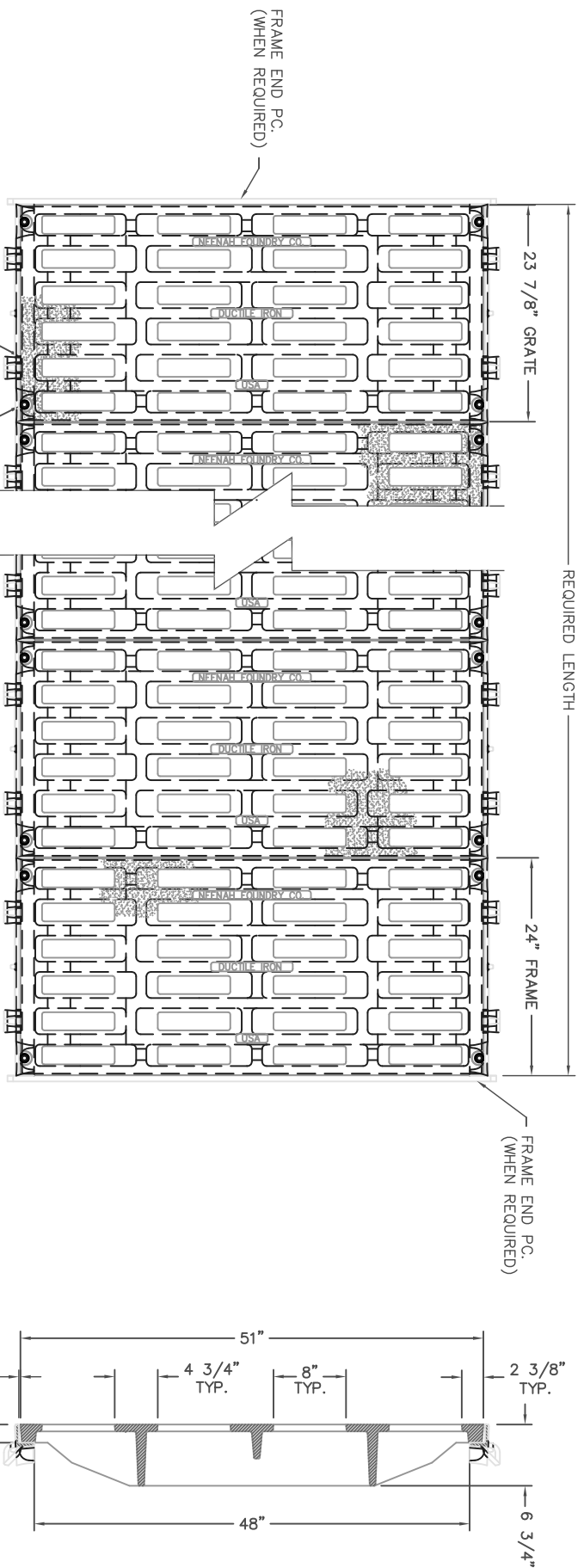
TYPE "A"  
GRATE OPENINGS

**These trench drains are capable of supporting the heavy wheel loads of today's commercial environments. Grates are bolted to gray iron frames.**

**Suitable for aircraft loading per FAA Advisory Circular AC150/5320-6D.**

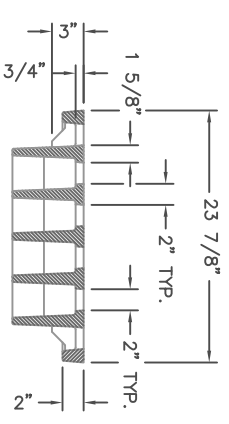
**Gray iron furnished per ASTM-A48 Class 35B.  
Ductile Iron furnished per ASTM A536 Grade 80-55-06.**





SECTION VIEWS

SCALE 1:4  
USE BOLT KIT #97575



FINISH: NO PAINT

COMPONENT NOS.: SIDE P.C. FRAME 4999-2420;  
END P.C. FRAME 4990-3251; GRATE 4999-2051

MATERIAL: SIDE P.C. FRAMES - CAST GRAY IRON ASTM A-48, CLASS 35A,  
END P.C. FRAMES - CAST GRAY IRON ASTM A-48, CLASS 35B,  
GRATES - CAST DUCTILE IRON ASTM A-536, 55 + KSI YIELD

CAD DWG. REF: 49900A ABDWG-1

DR.	RKB	SCALE	TITLE
CH.		1"=1'	R-4990-OA TYPE "A" BOLTED AIRPORT GRATE & FRAME W/ DEBRIS CHUTE
APP.		DIM CHK.	
DATE	10-26-2010		
			NEENAH FOUNDRY COMPANY NEENAH WISCONSIN 54956
			NE-49900AAB B

# R-4990 Airport, Port & Heavy Industrial Series

## BOLTED TRENCH FOR EXTRA HEAVY DUTY APPLICATIONS

These trench drains are capable of supporting the heavy wheel loads of today's commercial environments. For larger trench widths or greater loading requirements, please contact our Product Engineering Department.

Grates are bolted to gray iron frames.

For suggested forming procedures, see page 285.

Suitable for aircraft loading per FAA Advisory Circular AC150/5320-6D.

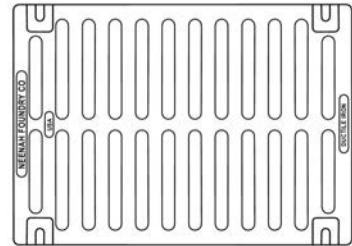
Catalog No.	A	B	C	Grate Matl.
R-4990-AA	8	2	6	Gray Iron
R-4990-BA	10	2	8	Gray Iron
R-4990-CA	12	2	10	Ductile Iron
R-4990-DA * **	14	2	12	Ductile Iron
R-4990-EA *	17	2	15	Ductile Iron
R-4990-FA *	20	2	18	Ductile Iron
R-4990-HA *	26	2	24	Ductile Iron
R-4990-KA2 *	34	2	31	Ductile Iron
R-4990-OA *	51	2	48	Ductile Iron

\* Type D solid cover available.

\*\* Type C grate available.

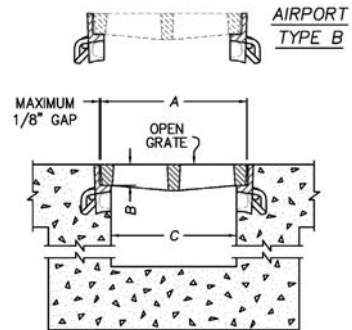
Gray iron furnished per ASTM-A48 Class 35B.

Ductile Iron furnished per ASTM A536 Grade 80-55-06.



TYPE 'A'  
GRATE OPENINGS

These grates are also available with superior duty R-4993 & R-4994 frames as shown on page 287.



Supplied By:

**TRENCHDRAIN  
SUPPLY**

877-903-7246

www.trenchdrainsupply.com